

# 23,627 SF AVAILABLE IN A CLASS A BUILDING



## 1725 EYE STREET, NW WASHINGTON, DC 20006

### SPACE AVAILABLE

Concourse – 6,259 RSF  
2nd Floor – 4,846 RSF  
9th Floor – 12,522 RSF

- 24 hour concierge/lobby attendant
- Conference center that accommodates up to 75 people
- Catering kitchen
- 4 levels of valet and self-parking
- Located in the Central Business District; within walking distance from the White House
- One block from Farragut West and Farragut North Metro stations
- Numerous high end restaurants and food trucks at Farragut Square
- On-site property management

For leasing information, contact  
**Carla C. Cavanaugh**  
*Vice President, Commercial Leasing*  
**202-617-3122**  
ccavanaugh@borgermanagement.com

**BORGER**  
MANAGEMENT

1825 K Street, NW, Suite 1250  
Washington, DC 20006

# CONCOURSE LEVEL



EYE STREET

## Concourse Level Suite C-15 6,259 RSF

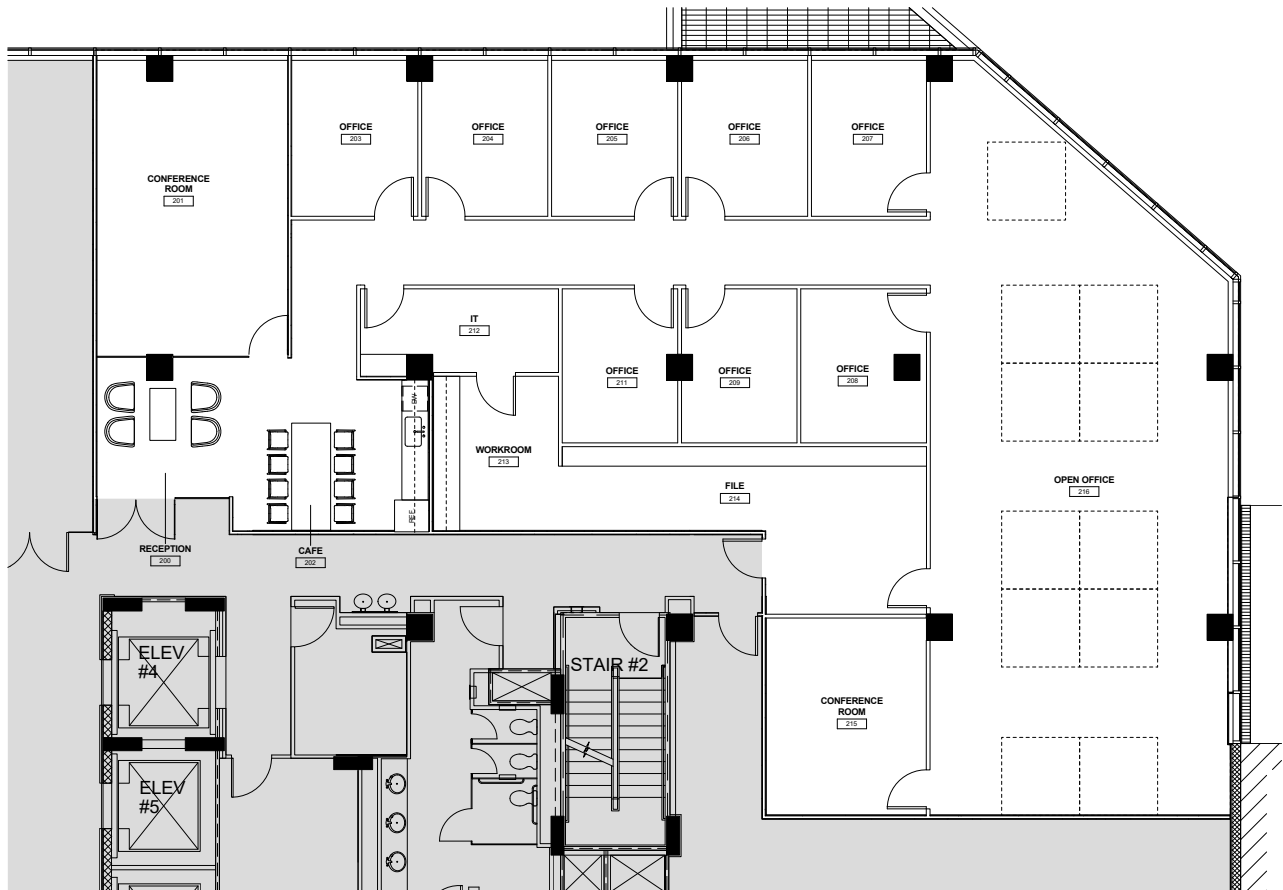
AVAILABLE JULY 2018

For leasing information, contact  
**Carla C. Cavanaugh**  
*Vice President, Commercial Leasing*  
**202-617-3122**  
[ccavanaugh@borgermanagement.com](mailto:ccavanaugh@borgermanagement.com)



1825 K Street, NW, Suite 1250  
Washington, DC 20006

# 2ND FLOOR AVAILABILITY



**SUITE 225**  
**4,846 RSF**  
PROPOSED PLAN

EYE STREET

For leasing information, contact  
**Carla C. Cavanaugh**  
*Vice President, Commercial Leasing*  
**202-617-3122**  
ccavanaugh@borgermanagement.com



1825 K Street, NW, Suite 1250  
Washington, DC 20006

# 9TH FLOOR



**SUITE 950**  
**12,522 RSF**  
PROPOSED PLAN

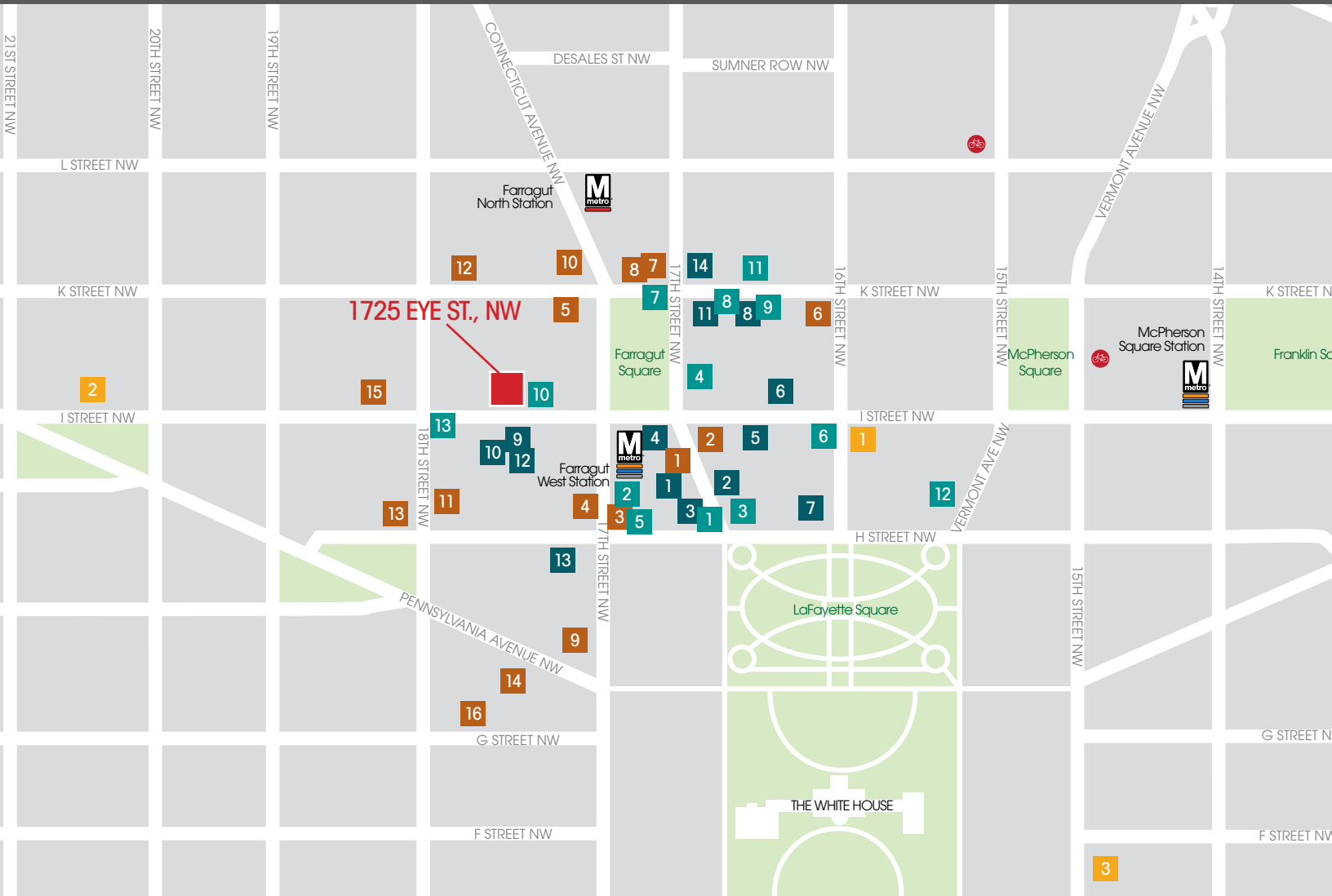
EYE STREET

For leasing information, contact  
**Carla C. Cavanaugh**  
Vice President, Commercial Leasing  
**202-617-3122**  
ccavanaugh@borgermanagement.com

**BORGER**  
MANAGEMENT

1825 K Street, NW, Suite 1250  
Washington, DC 20006

# LOCATION & AMENITIES



## RESTAURANTS

1. Equinox
2. The Bombay Club
3. The Oval Room
4. Cafe Soleil
5. Blackfinn Ameripub - DC
6. Brown Bag
7. Loeb's NY Deli
8. The Lafayette
9. McCormick & Schmick's Seafood & Steaks
10. Wicked Waffle
11. The Bottom Line
12. Subway
13. Asia DC
14. Center Court Cafe
15. Noodles & Company

## COFFEE

1. Van Houtte Coffee
2. Teatism Lafayette Park
3. Au Bon Pain
4. Le Pain Quotidien
5. Dunkin Donuts
6. Starbucks
7. Pret a Manger
8. Starbucks
9. Peet's Coffee & Tea
10. Panera Bread
11. Paul
12. Starbucks
13. Cafe' Grande
14. Corner Bakery Cafe
15. Starbucks
16. Havana Cafe

## BANKS

1. J.P. Morgan Private Bank
2. Deutsche Bank AG
3. BB&T
4. Japan Bank for Int'l
5. TD Bank
6. Nacional Financiera Snc
7. Capital One Bank
8. M&T Bank
9. Presidential Bank
10. Bank Fund Staff Federal Credit Union
11. Bank of Korea
12. DVA Federal Credit Union
13. The Capitol Bank

## HOTELS

1. The St. Regis, Washington, DC
2. Hotel Lombardy
3. The W Hotel, Washington, DC

 Capital Bike Share

For leasing information, contact  
**Carla C. Cavanaugh**  
*Vice President, Commercial Leasing*  
**202-617-3122**  
 ccavanaugh@borgermanagement.com

**BORGER**  
 MANAGEMENT

1825 K Street, NW, Suite 1250  
 Washington, DC 20006