

# 20,975 SF AVAILABLE IN NEWLY RENOVATED BUILDING



## 818 CONNECTICUT AVENUE, NW WASHINGTON, DC 20006

### SPACE AVAILABLE

2nd Floor – 7,317 RSF

4th Floor – 2,578 RSF

5th Floor – 2,181 RSF

8th Floor – 3,424 RSF

12th Floor – 5,475 RSF

- 24 hour concierge/lobby attendant
- Beautifully renovated building including new lobby, elevator cabs, restrooms and fitness center with showers
- Parking in building
- 1/2 block from Farragut West and Farragut North
- Located in the Central Business District; 2 blocks from the White House
- Within walking distance of the Army Navy Club, Farragut Square

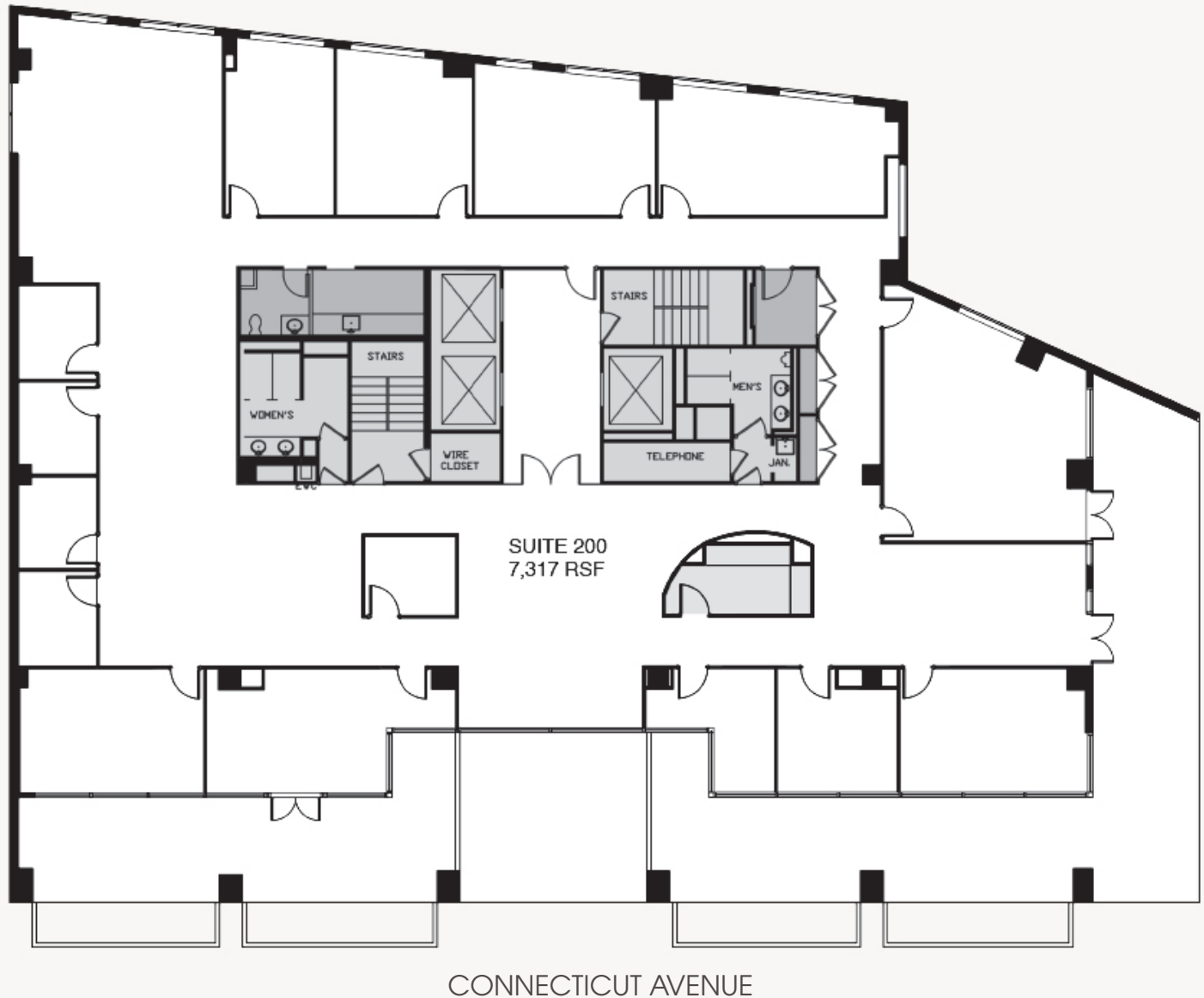
For leasing information, contact  
**Carla C. Cavanaugh**  
*Vice President, Commercial Leasing*  
202-617-3122  
[ccavanaugh@borgermanagement.com](mailto:ccavanaugh@borgermanagement.com)

**BORGER**  
MANAGEMENT

1825 K Street, NW, Suite 1250  
Washington, DC 20006

# 2ND FLOOR AVAILABILITY

AS-BUILT PLAN



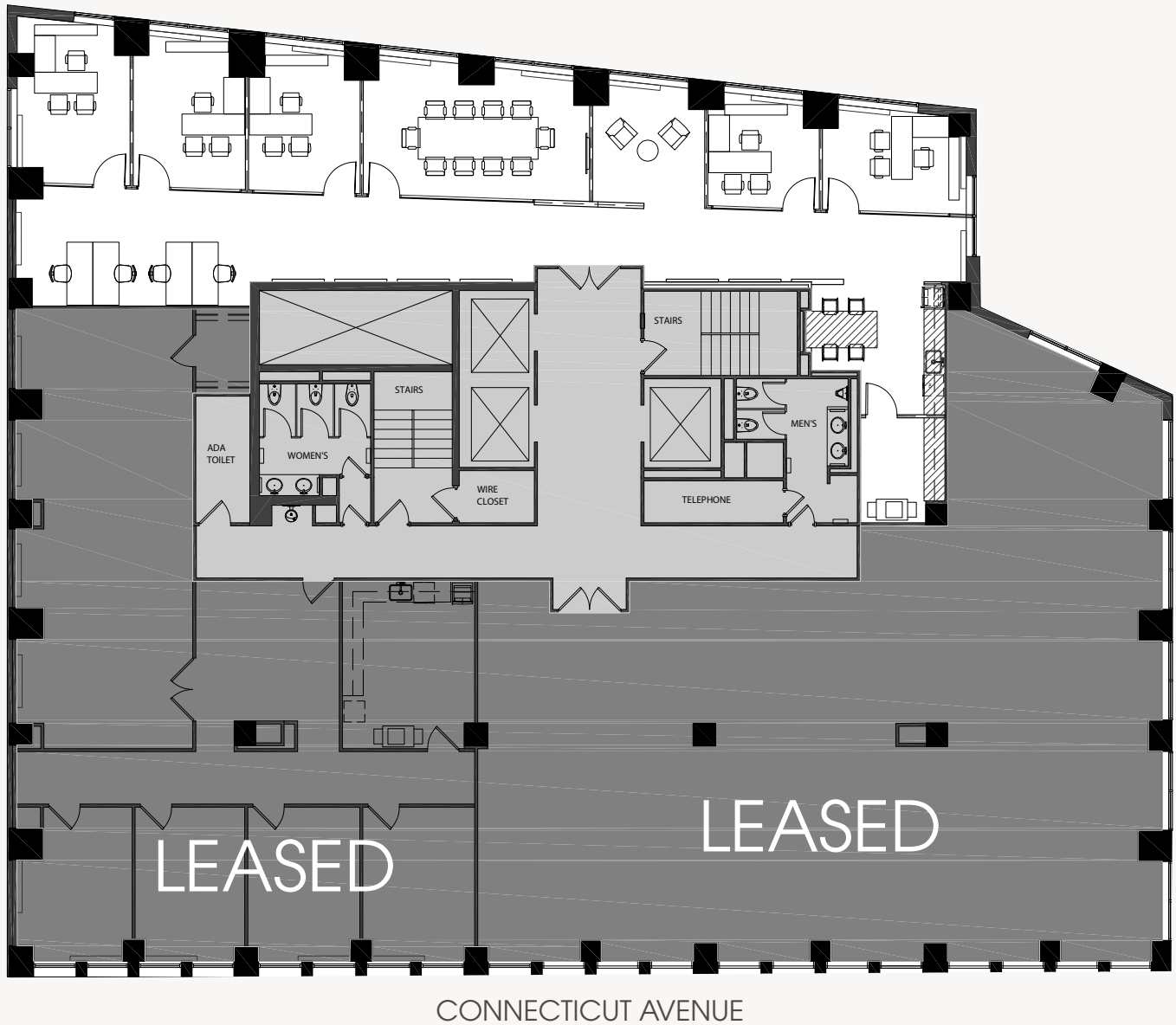
**SUITE 200**  
**7,317 RSF**

For leasing information, contact  
**Carla C. Cavanaugh**  
*Vice President, Commercial Leasing*  
202-617-3122  
ccavanaugh@borgermanagement.com

**BORGER**  
MANAGEMENT  
1825 K Street, NW, Suite 1250  
Washington, DC 20006

# 4TH FLOOR AVAILABILITY

AS-BUILT PLAN



**SUITE 425**  
**2,578 RSF**

For leasing information, contact  
**Carla C. Cavanaugh**  
*Vice President, Commercial Leasing*  
202-617-3122  
[ccavanaugh@borgermanagement.com](mailto:ccavanaugh@borgermanagement.com)

**BORGER**  
MANAGEMENT

1825 K Street, NW, Suite 1250  
Washington, DC 20006

# 5TH FLOOR AVAILABILITY

## PROPOSED PLAN



**SUITE 501**  
**2,181 RSF**

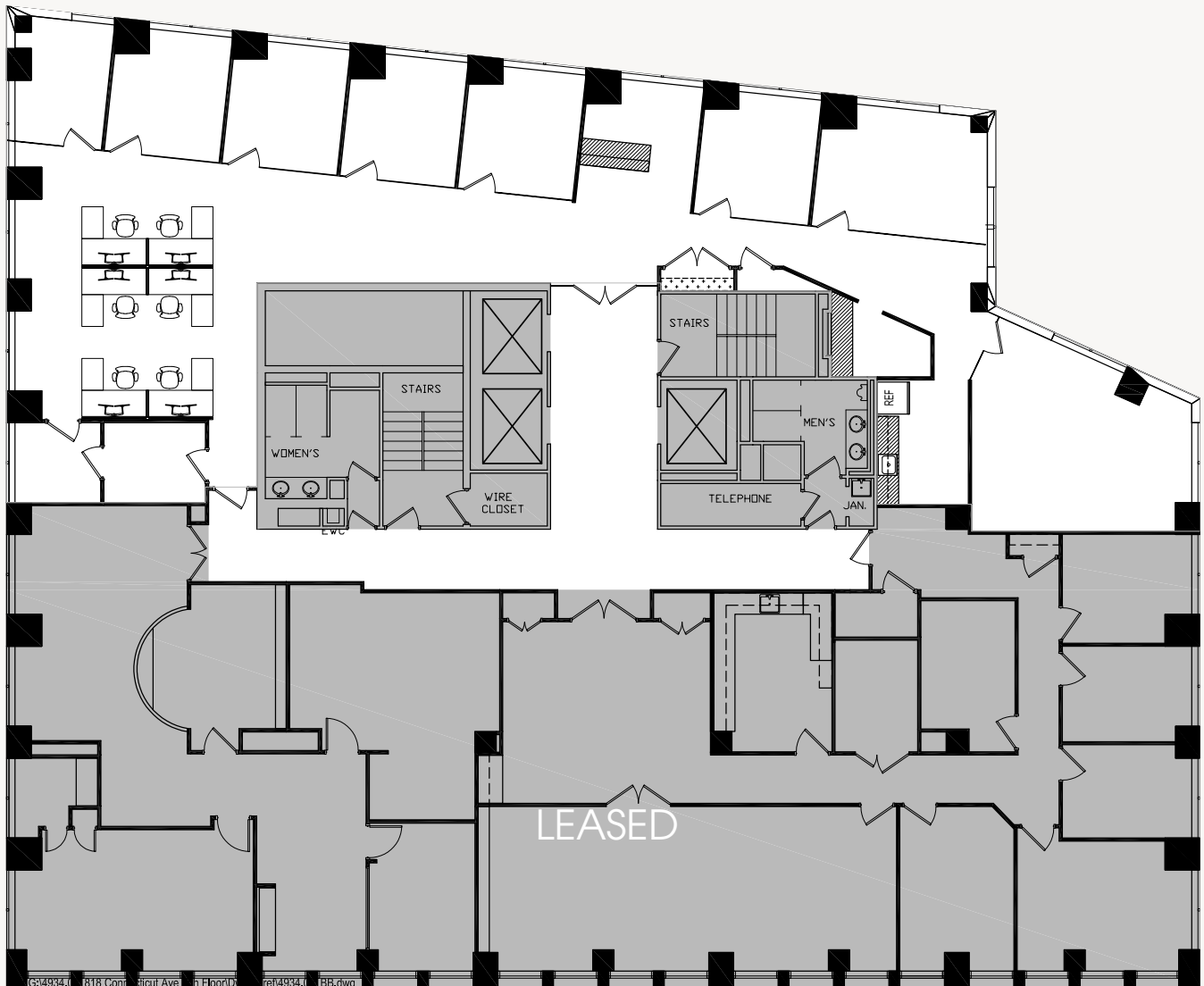
For leasing information, contact  
**Carla C. Cavanaugh**  
*Vice President, Commercial Leasing*  
202-617-3122  
ccavanaugh@borgermanagement.com

**BORGER**  
MANAGEMENT

1825 K Street, NW, Suite 1250  
Washington, DC 20006

# 8TH FLOOR AVAILABILITY

AS-BUILT PLAN



**SUITE 850**  
**3,424 RSF**

CONNECTICUT AVENUE

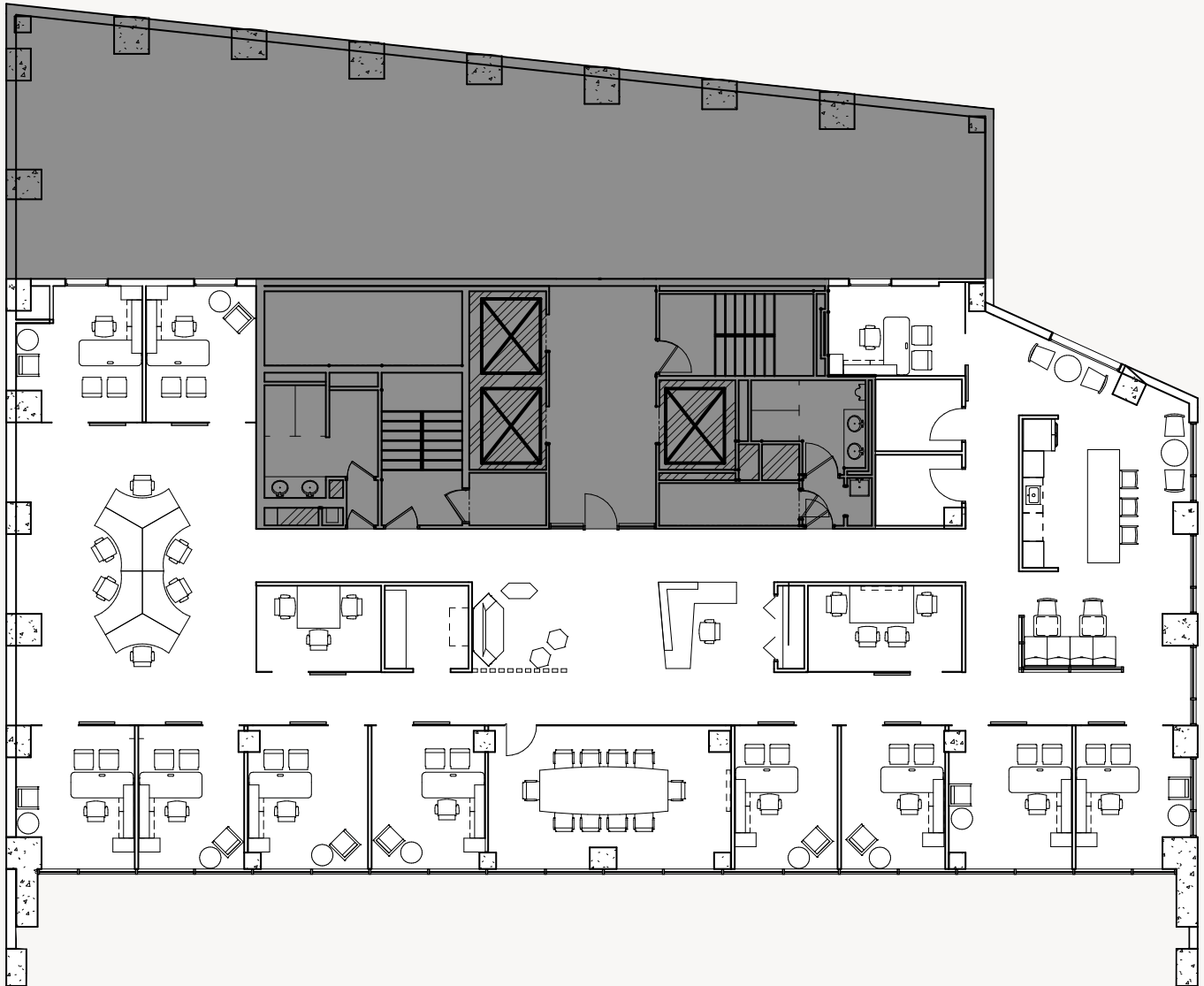
For leasing information, contact  
**Carla C. Cavanaugh**  
*Vice President, Commercial Leasing*  
202-617-3122  
ccavanaugh@borgermanagement.com

**BORGER**  
MANAGEMENT

1825 K Street, NW, Suite 1250  
Washington, DC 20006

# 12TH FLOOR AVAILABILITY

## PROPOSED PLAN



CONNECTICUT AVENUE

**SUITE 1200**  
**5,475 RSF**

For leasing information, contact  
**Carla C. Cavanaugh**  
*Vice President, Commercial Leasing*  
202-617-3122  
ccavanaugh@borgermanagement.com

**BORGER**  
MANAGEMENT

1825 K Street, NW, Suite 1250  
Washington, DC 20006



# LOCATION & AMENITIES



## RESTAURANTS

1. Equinox
2. The Bombay Club
3. The Oval Room
4. Cafe Soleil
5. Blackfinn Ameripub - DC
6. Brown Bag
7. Loeb's NY Deli
8. The Lafayette
9. McCormick & Schmick's Seafood & Steaks
10. Wicked Waffle
11. The Bottom Line
12. Subway
13. Asia DC
14. Center Court Cafe
15. Noodles & Company

## COFFEE

1. Van Houtte Coffee
2. Teatism Lafayette Park
3. Au Bon Pain
4. Le Pain Quotidien
5. Dunkin Donuts
6. Starbucks
7. Pret a Manger
8. Starbucks
9. Peet's Coffee & Tea
10. Panera Bread
11. Paul
12. Starbucks
13. Cafe' Grande
14. Corner Bakery Cafe
15. Starbucks
16. Havana Cafe

## BANKS

1. J.P. Morgan Private Bank
2. Deutsche Bank AG
3. BB&T
4. Japan Bank for Int'l
5. TD Bank
6. Nacional Financiera Snc
7. Capital One Bank
8. M&T Bank
9. Presidential Bank
10. Bank Fund Staff Federal Credit Union
11. Bank of Korea
12. DVA Federal Credit Union
13. The Capitol Bank

## HOTELS

1. The St. Regis, Washington, DC
2. Hotel Lombardy
3. The W Hotel, Washington, DC



For leasing information, contact  
**Carla C. Cavanaugh**  
*Vice President, Commercial Leasing*  
 202-617-3122  
[ccavanaugh@borgermanagement.com](mailto:ccavanaugh@borgermanagement.com)

**BORGER**  
 MANAGEMENT

1825 K Street, NW, Suite 1250  
 Washington, DC 20006

THE INFORMATION CONTAINED HEREIN IS BELIEVED TO BE ACCURATE BUT THE LANDLORD OR AGENT DOES NOT WARRANT OR GUARANTY THE ACCURACY AND THEREFORE IS SUBJECT TO CHANGE WITHOUT NOTICE.