



THE ALICE PRINCETON



Distinctly Different. Decidedly Princeton.

Located at the corner of Terhune Rd. and North Harrison St., The Alice is a boutique apartment residence built for the human scale. Inspired and influenced by the local flair of Princeton, The Alice brings uncompromised design, features and services together for life as you live it. Choose from one-, two- and three-bedroom apartments with private balconies, plus a special penthouse collection. Appreciate endless comforts at your fingertips – find unmatched amenities designed to cultivate human connection, conversation, wellness, and play. Working and studying from home is made easy – set yourself up in our library, private living rooms, or work from home nooks. Take a break and get moving in our fitness center with state-of-the-art cardio, interactive fitness classes and private workout pods, or unwind on our rooftop terrace to enjoy the sunsets at our fire pit and grilling stations with ample seating for dining alfresco.

APARTMENT INTERIOR FEATURES

- Tall windows & private balconies
- Oak plank flooring and clean/warm white wall paint
- Two tone slab panel kitchen cabinets
- Stone countertops with tile backsplash
- GE stainless steel appliances
- Kitchen island with linear pendant
- Ambient lighting
- High contrast bathroom design with rain showers
- In-home GE washer/dryer
- Abundant closet space
- Smart home technology—Nest thermostat
- Penthouse collection with designer finishes

COMMUNITY AMENITIES

- Curated artwork, sculptural furniture and millwork
- Lounge with tasting room & game area
- Library & private work from home nooks
- Seasonal rooftop terrace with fire pit & grilling
- Fitness club with private workout pods
- AliceARTS Gallery featuring local artists' work
- Dog wash
- Mail & package handling
- Private storage & bike storage available
- Landscaped grounds
- Adjacent to new dog park & Grover Park
- Adjacent to Princeton Shopping Center and a short walk to Princeton University, McCarter Theatre and more





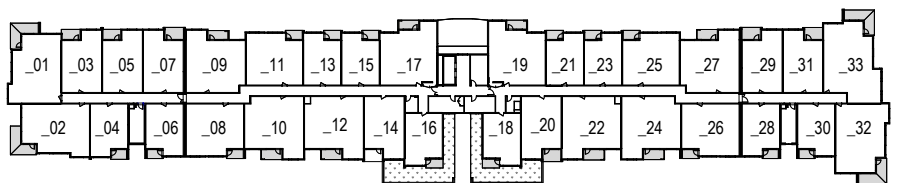
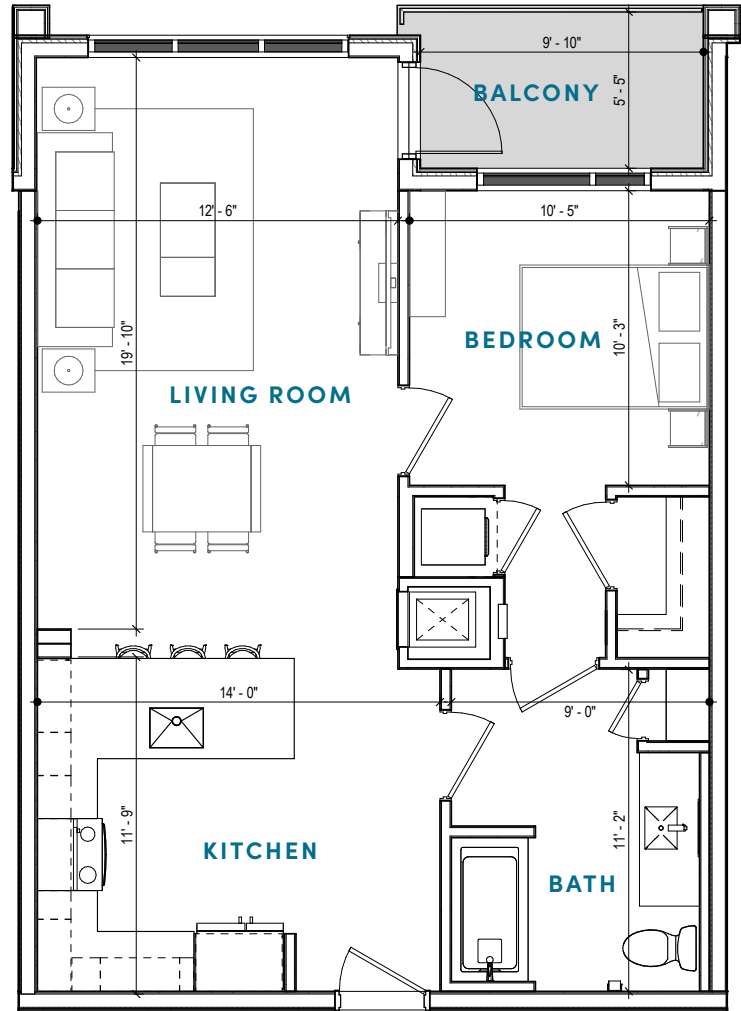
1 BEDROOM

1 Bathroom | 674 S. F.

DATE AVAILABLE:

RATE:

APARTMENT:





THE
ALICE
PRINCETON

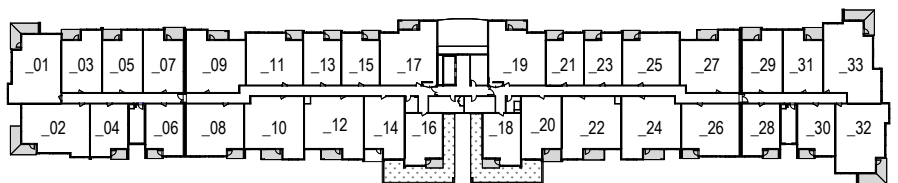
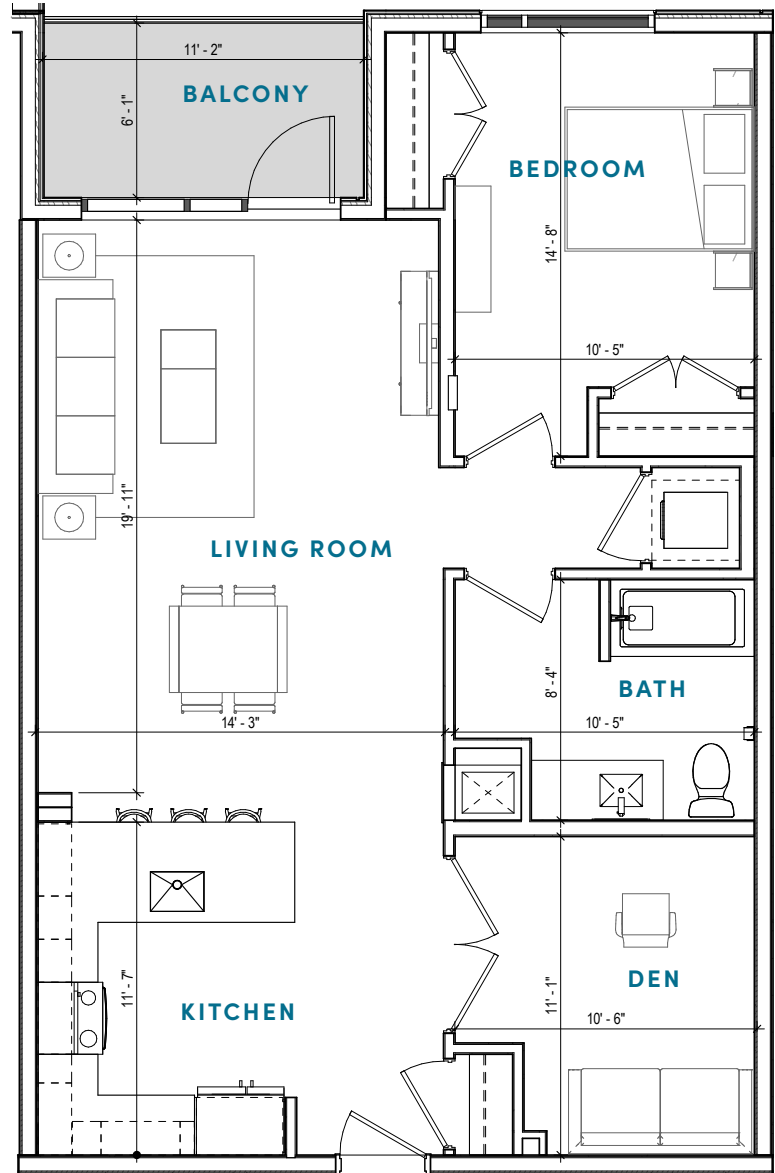
1 BEDROOM

1 Bathroom | Den | 853 S. F.

DATE AVAILABLE:

RATE:

APARTMENT:





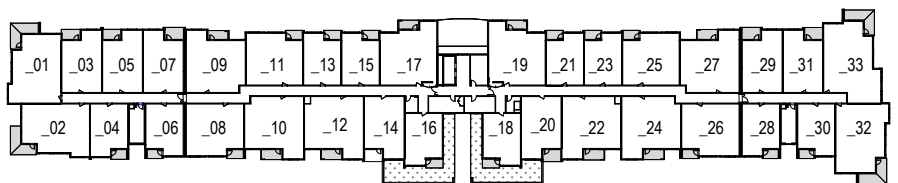
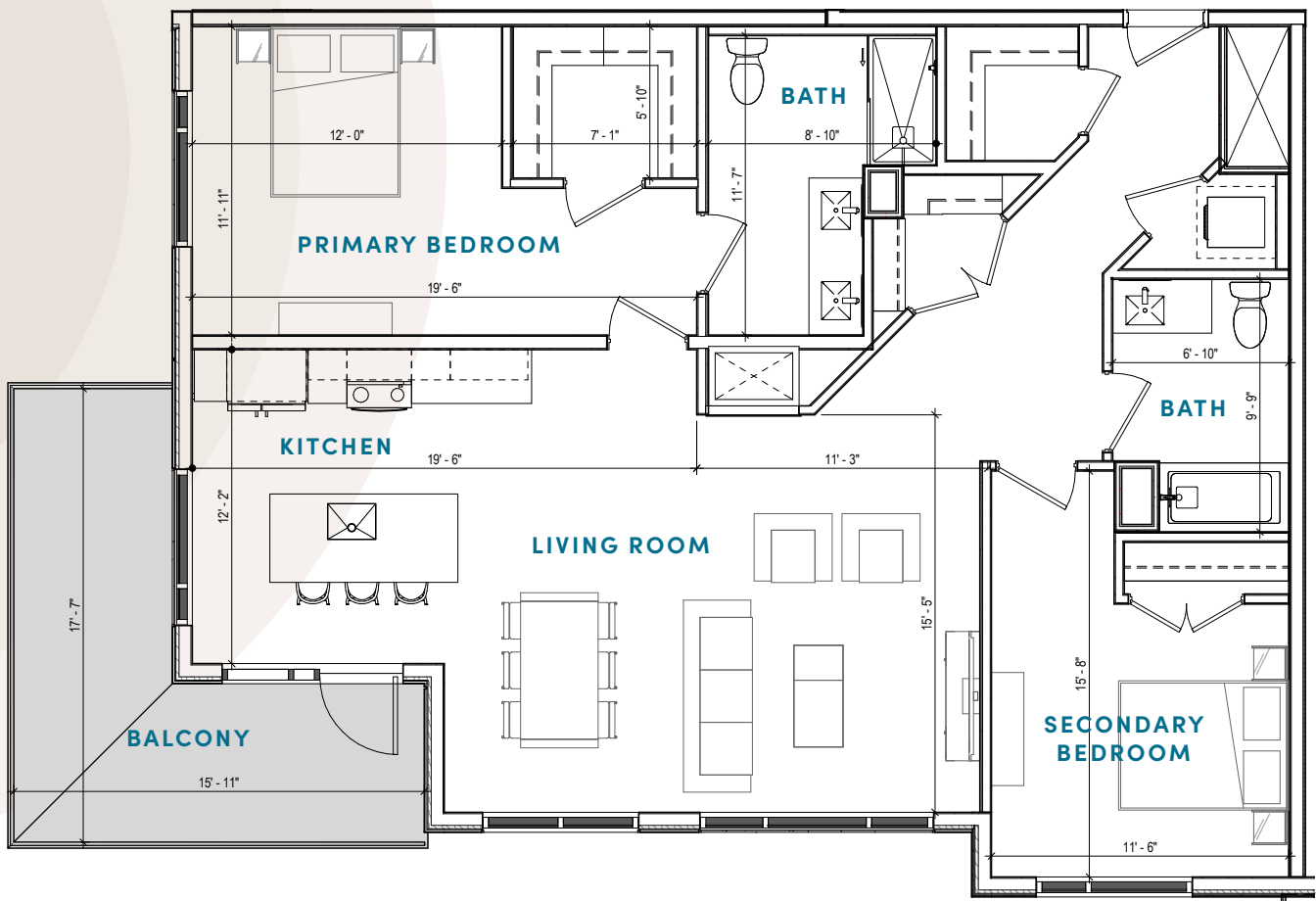
2 BEDROOM

2 Bathroom | 1,169 S. F.

DATE AVAILABLE:

RATE:

APARTMENT:





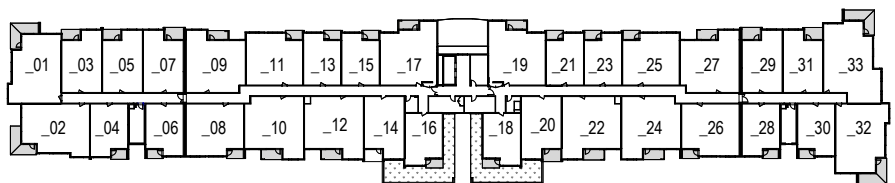
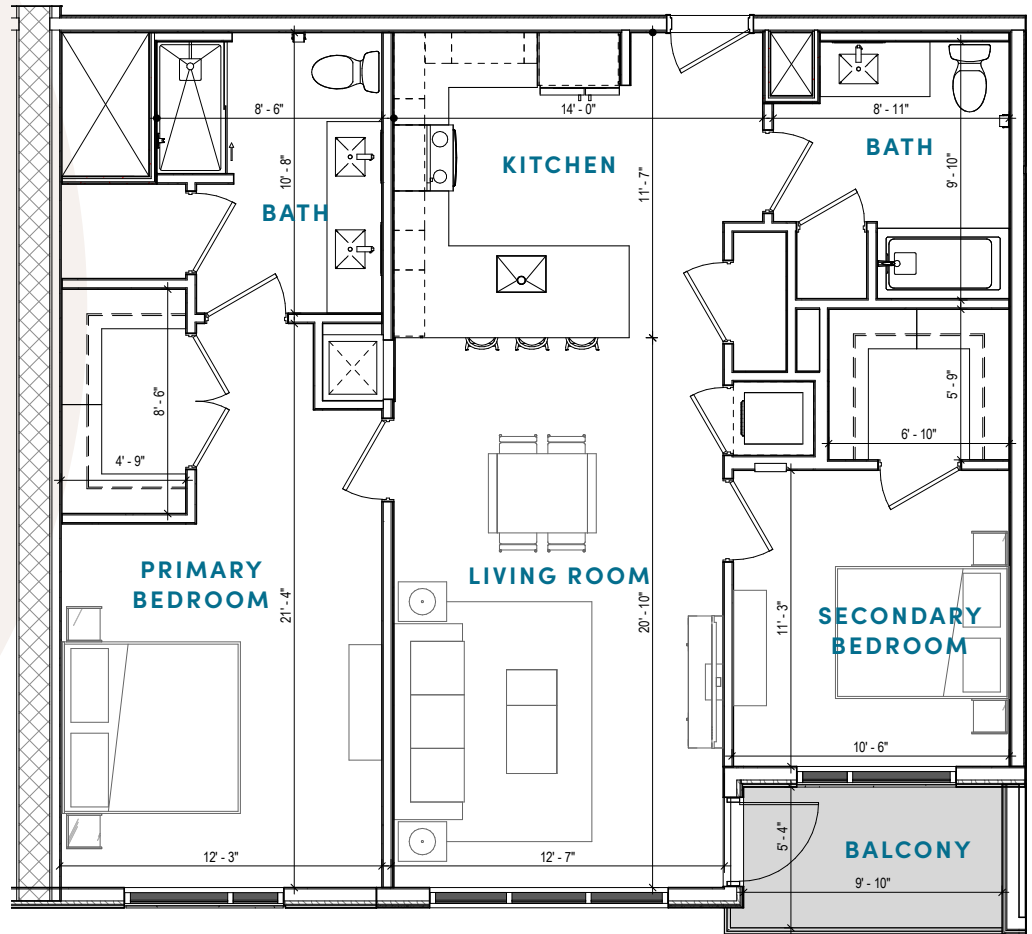
2 BEDROOM

2 Bathroom | 1,029 S. F.

DATE AVAILABLE:

RATE:

APARTMENT:





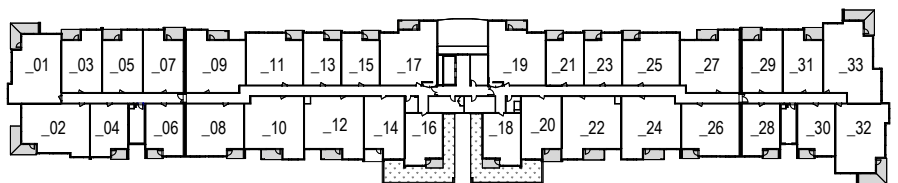
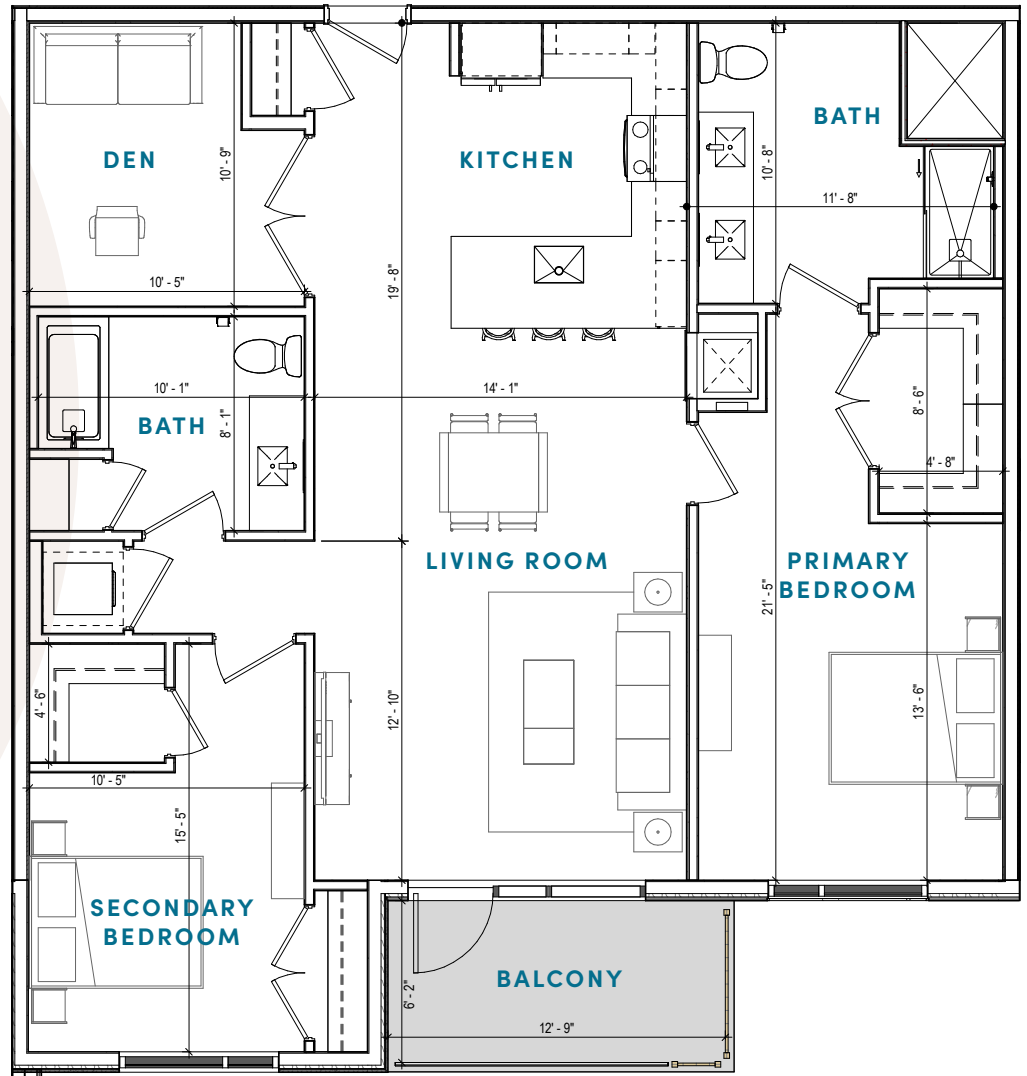
2 BEDROOM

2 Bathroom | Den | 1,202 S. F.

DATE AVAILABLE:

RATE:

APARTMENT:





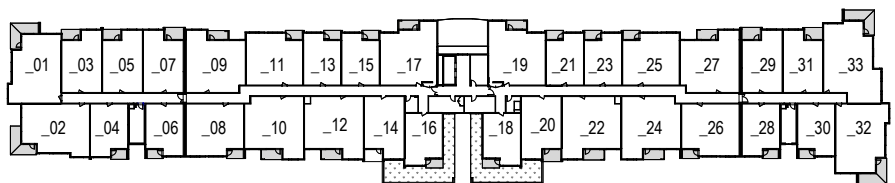
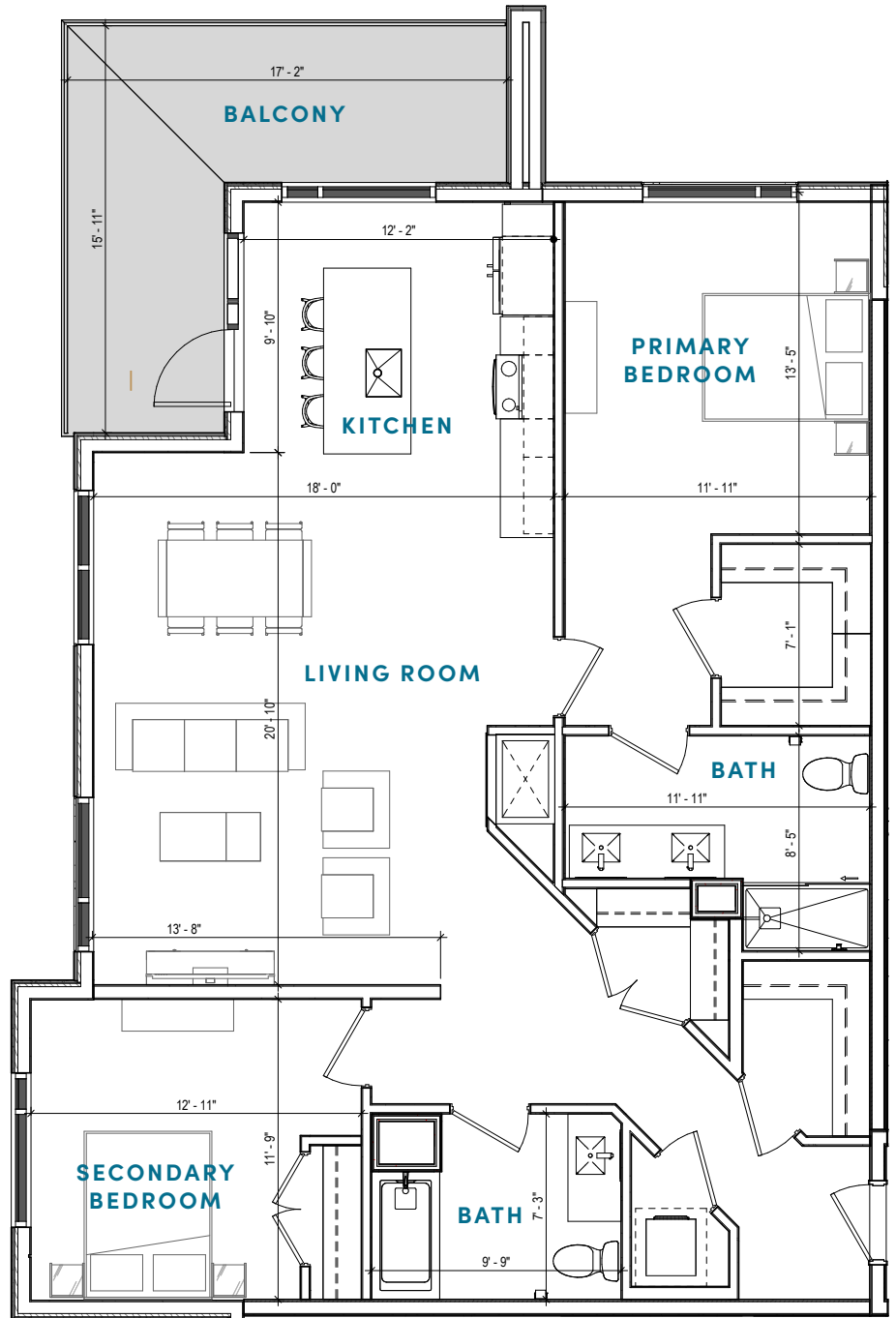
2 BEDROOM

2 Bathroom | 1,199 S. F.

DATE AVAILABLE:

RATE:

APARTMENT:





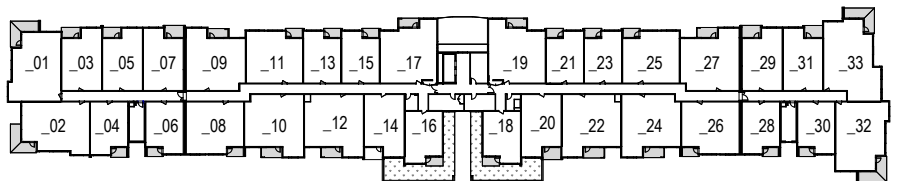
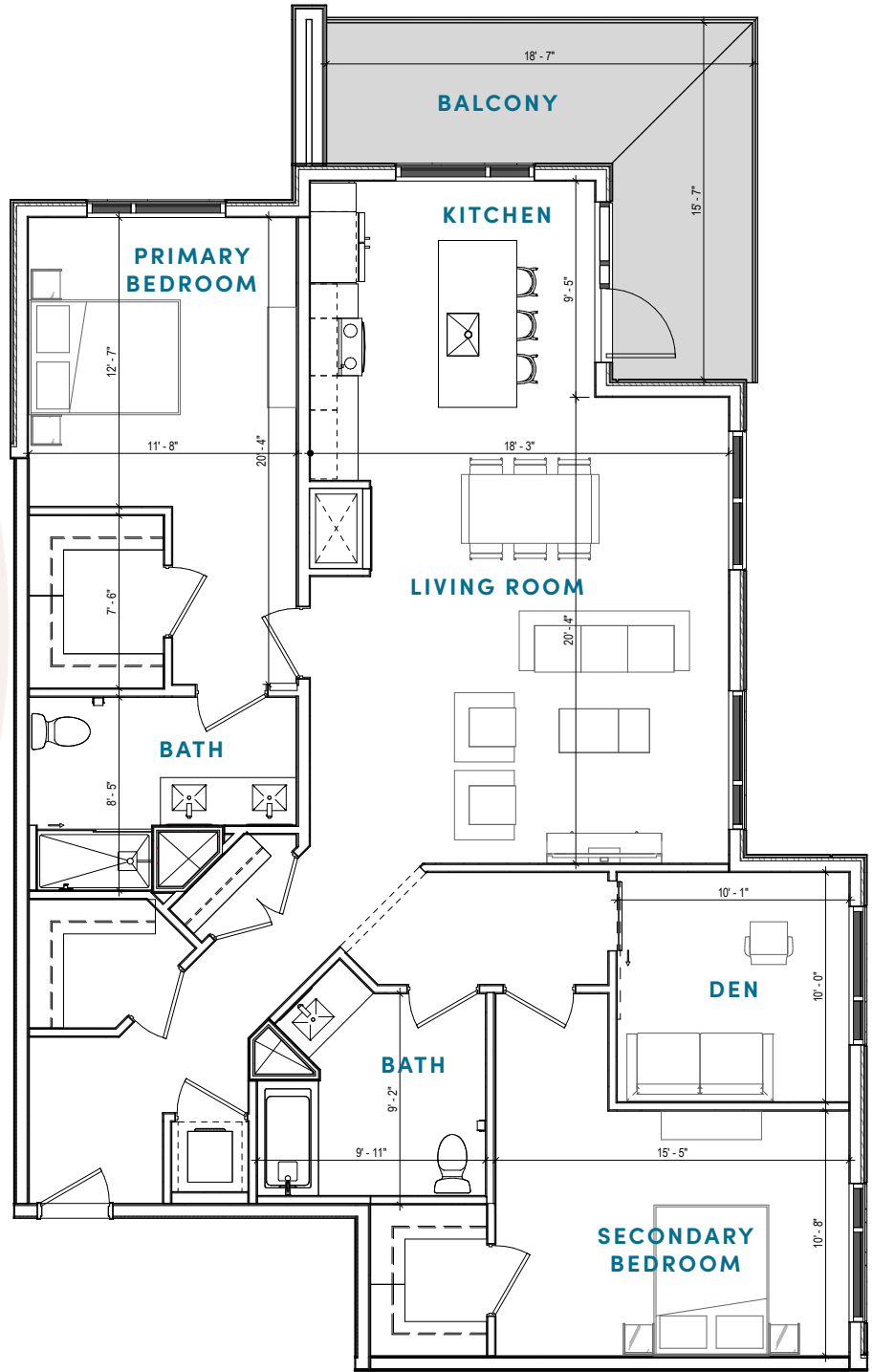
2 BEDROOM

2 Bathroom | Den | 1,415 S. F.

DATE AVAILABLE:

RATE:

APARTMENT:





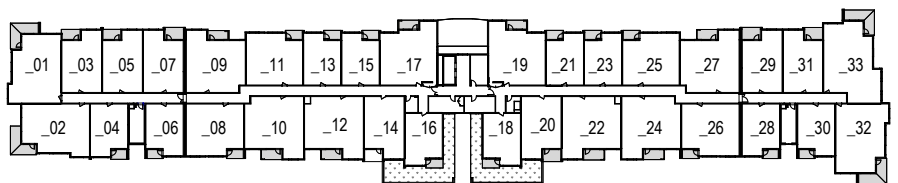
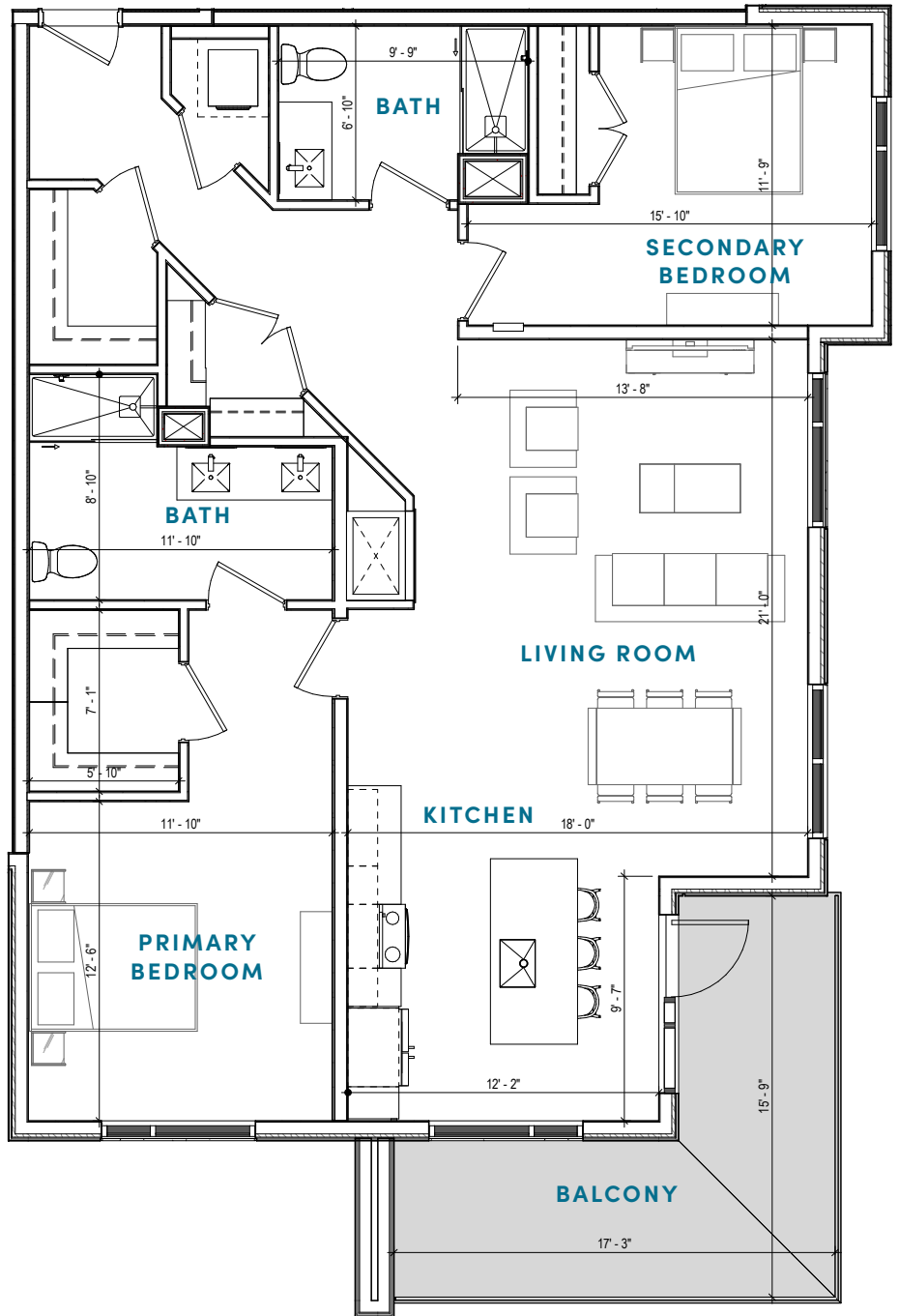
2 BEDROOM

2 Bathroom | 1,201 S. F.

DATE AVAILABLE:

RATE:

APARTMENT:





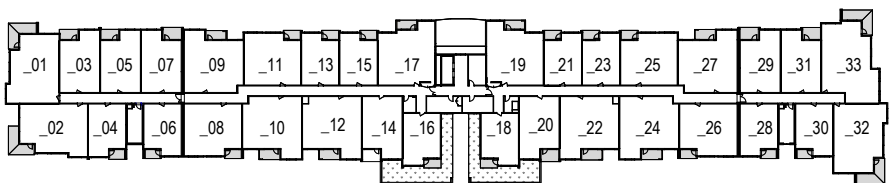
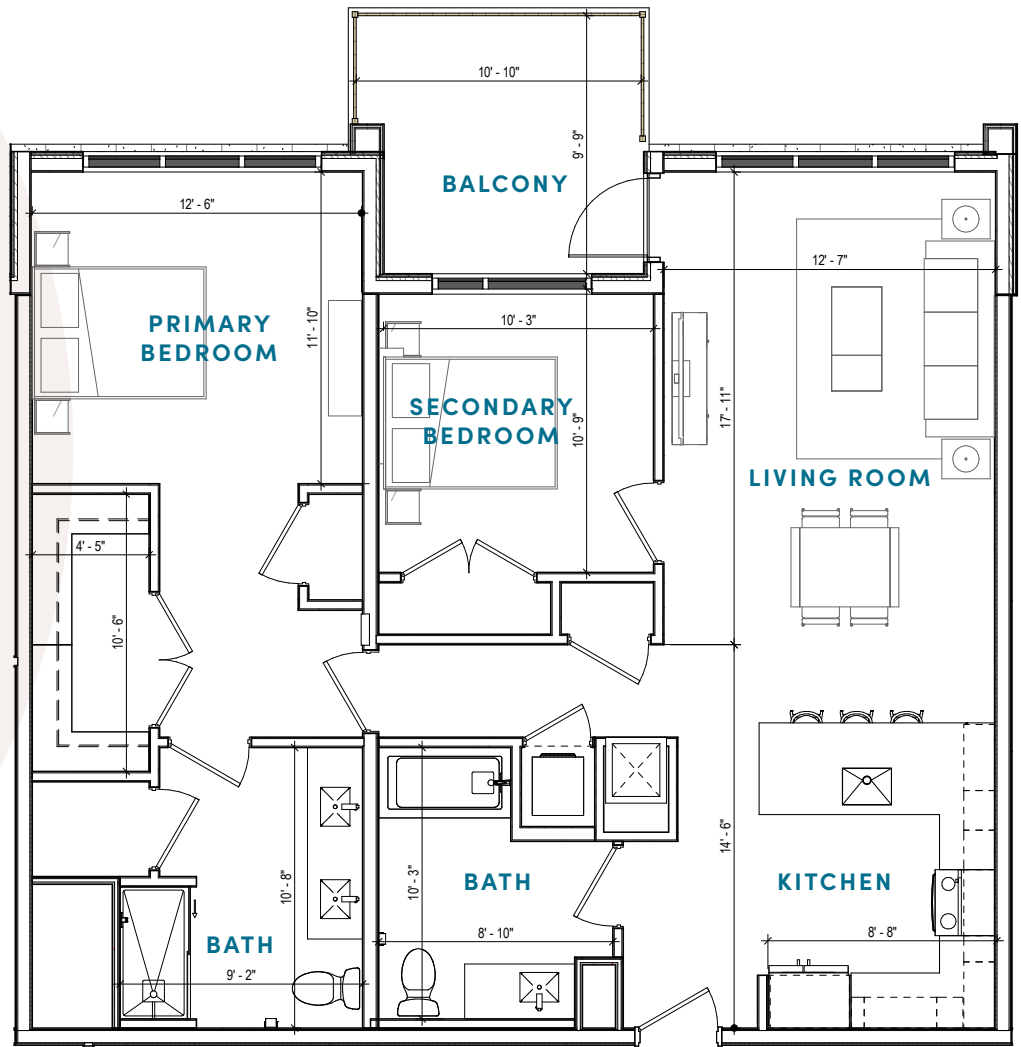
2 BEDROOM

2 Bathroom | 1,047 S. F.

DATE AVAILABLE:

RATE:

APARTMENT:





3 BEDROOM

2 Bathroom | 1,149 S. F.

DATE AVAILABLE:

RATE:

APARTMENT:

