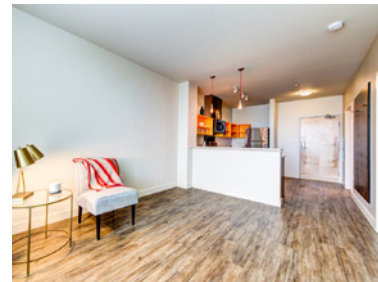


anthem

ON 12TH

103 12th Avenue, Seattle, Washington 98122 | T: (877) 204-5282

AnthemOn12.com



SEATTLE AREA RENTAL RATES MAY BE ON THE RISE, BUT YOUR RENT DOESN'T HAVE TO!

Introducing Anthem on 12th, Seattle's mid-rise apartment community. The Multifamily Tax Exemption Program helps individuals live close to where they work, at moderated prices, to help fit their lifestyle.

View to see if your household size and income range would allow you to take advantage of the MFTE opportunity.

DOES THE MULTIFAMILY TAX EXEMPTION PROGRAM NOT WORK FOR YOU?

Not to worry! Anthem on 12th apartments offers studios, 1- & 2-bedroom homes with every renter forefront of mind. If you're ready for something more than the usual apartment living experience, we think it's time you visited Anthem on 12th.



STUDIO APARTMENT: \$1,274

| Household Size: | Minimum Income Guidelines (annually) | Maximum Income Guidelines |
|-----------------|--------------------------------------|---------------------------|
| 1 Person | \$30,576 | \$52,460 |
| 2 Persons | \$30,576 | \$60,160 |

STUDIO APARTMENT: \$1,577

| Household Size: | Minimum Income Guidelines (annually) | Maximum Income Guidelines |
|-----------------|--------------------------------------|---------------------------|
| 1 Person | \$37,848 | \$64,790 |
| 2 Persons | \$37,848 | \$74,050 |

1 BEDROOM APARTMENT: \$1,688

| Household Size: | Minimum Income Guidelines (annually) | Maximum Income Guidelines |
|-----------------|--------------------------------------|---------------------------|
| 1 Person | \$40,512 | \$60,740 |
| 2 Persons | \$40,512 | \$69,420 |
| 3 Persons | \$40,512 | \$78,100 |

2 BEDROOM APARTMENTS: \$2,150

| Household Size: | Minimum Income Guidelines (annually) | Maximum Income Guidelines |
|-----------------|--------------------------------------|---------------------------|
| 2 Persons | \$51,600 | \$78,680 |
| 3 Persons | \$51,600 | \$88,510 |
| 4 Persons | \$51,600 | \$98,350 |
| 5 Persons | \$51,600 | \$106,210 |

* Median income level and rents are subject to change based on the Seattle Housing Authority. All applications are subject to resident and eligibility screening approval.