

720 7TH STREET, NW

WASHINGTON, DC

AVAILABLE SPACE

FOURTH FLOOR 5,249 SF



PROPERTY HIGHLIGHTS

- SECURED ACCESS
- HISTORIC BOUTIQUE BUILDING
- EXPOSED BRICK
- ANTIQUE TIN CEILINGS
- FULL FLOOR SUITE
- ACROSS FROM CAPITAL ONE ARENA



BRITTANY RICE
PROPERTY MANAGER

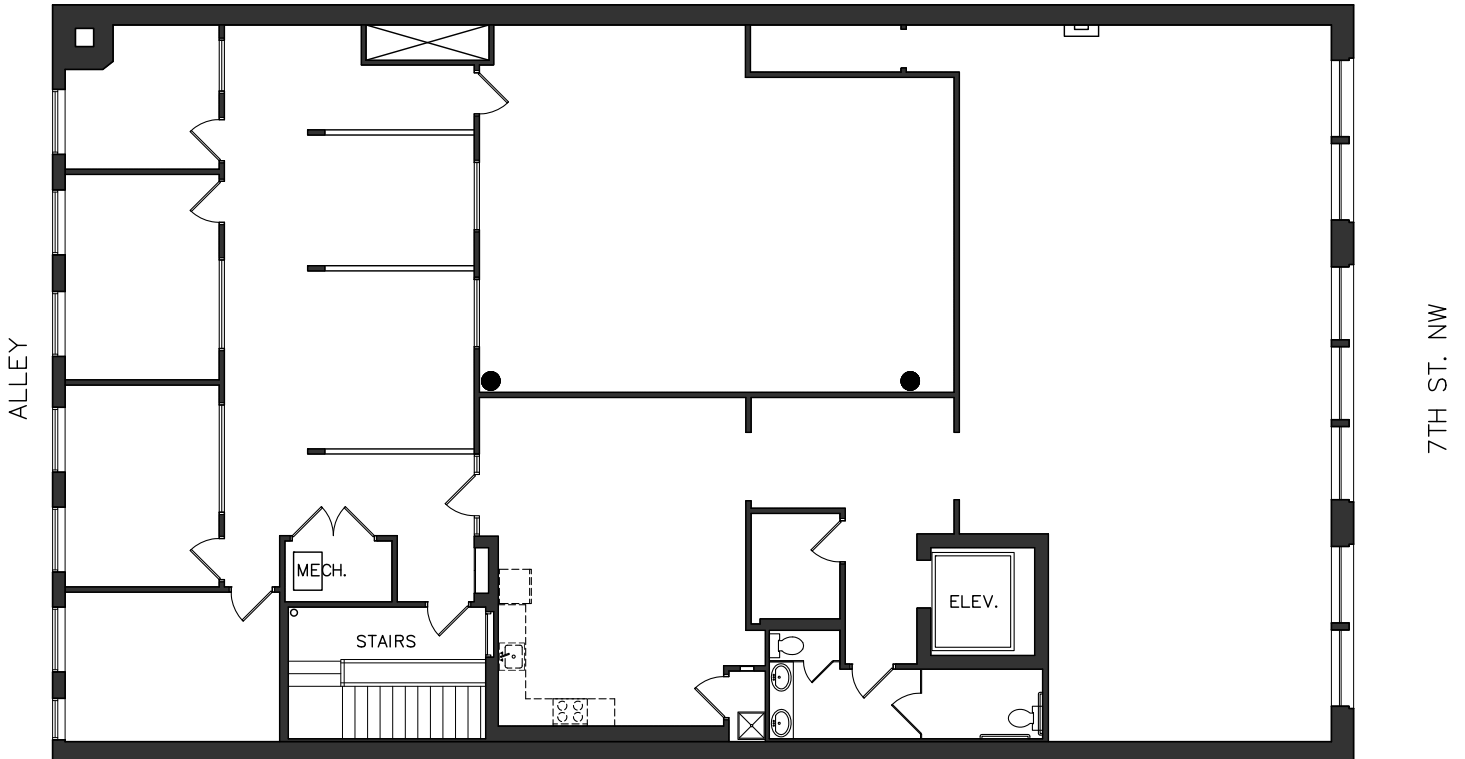
202.349.2793 DIRECT
BRICE@BORGERMANAGEMENT.COM

720 7TH STREET, NW

WASHINGTON, DC

FLOOR PLAN

4TH FLOOR PLAN



THIS FULL FLOOR SUITE IS THE TOP FLOOR OF A HISTORIC BOUTIQUE BUILDING IN THE HEART OF THE CHINATOWN NEIGHBORHOOD.

THE 4TH FLOOR FEATURES EXPANSIVE WINDOW LINES ALONG 7TH STREET WITH VIEWS OF CHINATOWN AND CAPITAL ONE ARENA.

720 7TH STREET, NW

WASHINGTON, DC

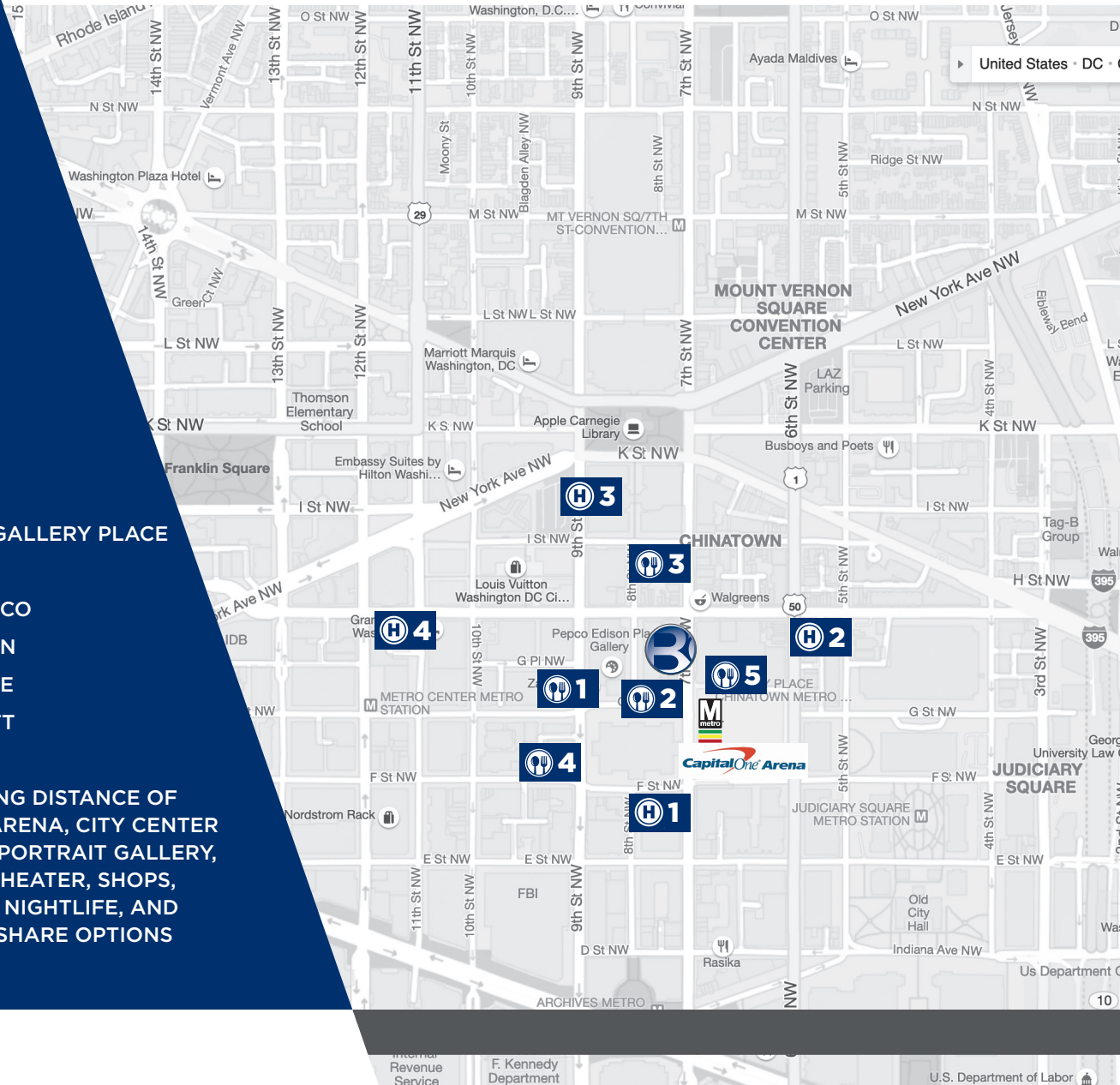
LOCATION

CHINATOWN

1. ZAYTINYA
2. HIPCITYVEG
3. YARD HOUSE
4. THE SMITH
5. CLYDE'S OF GALLERY PLACE

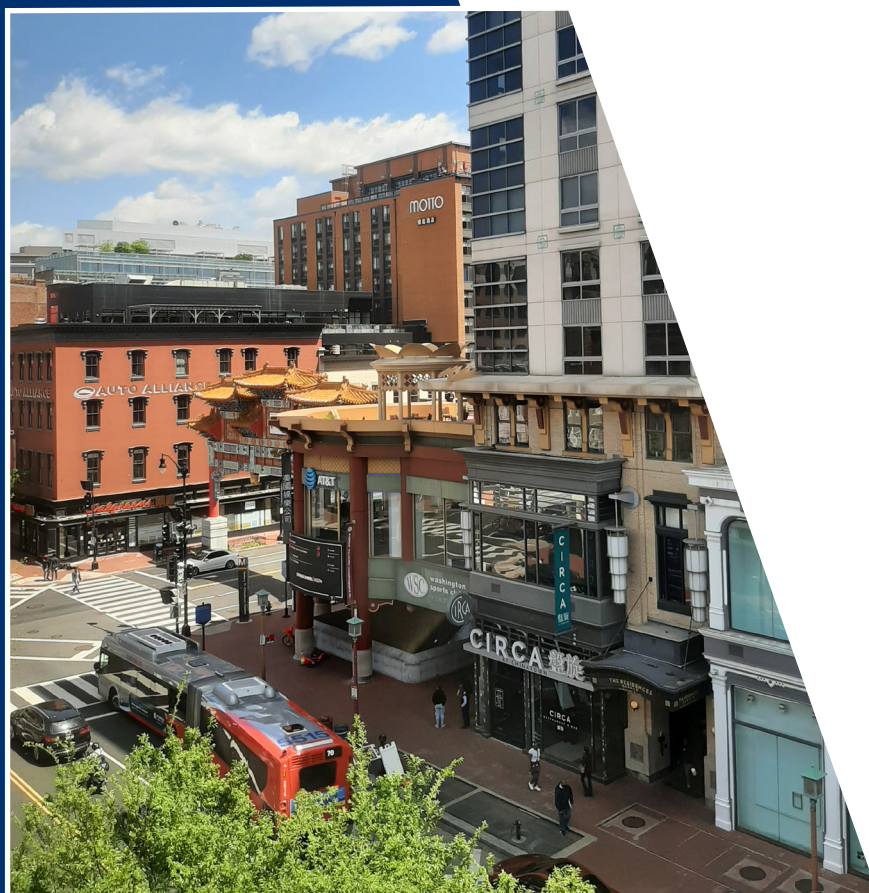
1. HOTEL MONACO
2. FAIRFIELD INN
3. RENAISSANCE
4. GRAND HYATT

WITHIN WALKING DISTANCE OF
CAPITAL ONE ARENA, CITY CENTER
DC, NATIONAL PORTRAIT GALLERY,
THE WARNER THEATER, SHOPS,
RESTAURANTS, NIGHTLIFE, AND
MULTIPLE BIKESHARE OPTIONS



BRITTANY RICE
PROPERTY MANAGER

202.349.2793 DIRECT
BRICE@BORGERMANAGEMENT.COM



VIEWS OF CHINATOWN FROM OFFICE SUITE