

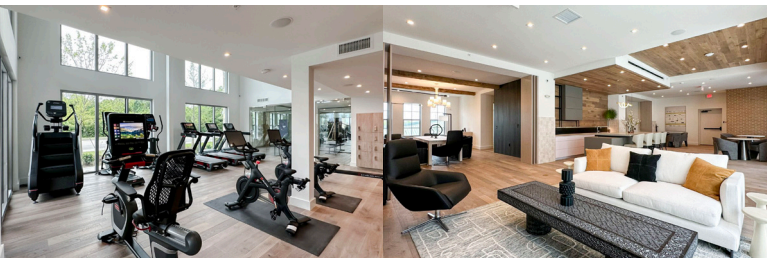


LEGACY | PATRIOTS POINT

APARTMENTS

Preferred Employer Program

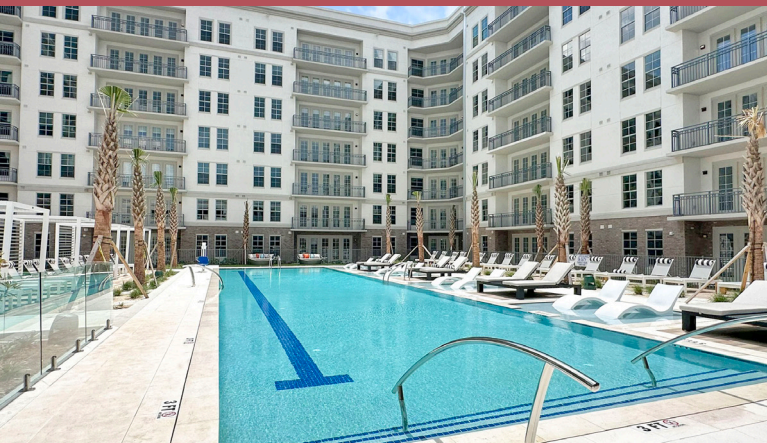
Legacy Patriots Point Apartments is located next to Charleston Harbor with impressive views of the water and famed Arthur Ravenel Jr. Bridge. Ideally situated near downtown Charleston, Isle of Palms and Sullivan's Island, Legacy Patriots Point Apartments is near shopping, fine dining and entertainment. Our upscale community is pet-friendly, smoke-free, and offers spacious one- and two-bedroom suites with premium finishes and features. Our popular amenities appeal to every lifestyle and include an impressive multi-story clubhouse with rooftop terrace, bi-level fitness studio, saltwater pool with wet deck, dog spa and more. You've found your new home, contact us for more information!



843.396.5820 | LegacyPatriotsPoint.com
180 Patriots Point Rd. | Mount Pleasant, SC 29464
legacypatriotspoint@gciresidential.com

LEGACY | PATRIOTS POINT

APARTMENTS



Preferred Employers will receive:

- 10% off First Full Month's Rent

We are pleased to offer special incentives to the employees of:

- Boeing
- Blackbaud
- The Citadel
- East Cooper Medical Center
- Joint Base Charleston
- MUSC
- Berkeley, Charleston and Dorchester County Schools
- International Paper
- Roper St. Francis
- Trident Health Systems
- Benefitfocus
- Mercedes and Volvo Plant
- College of Charleston and Charleston School of Law
- Government, State and City Employees

0624



843.396.5820 | LegacyPatriotsPoint.com
180 Patriots Point Rd. | Mount Pleasant, SC 29464
legacypatriotspoint@gciresidential.com